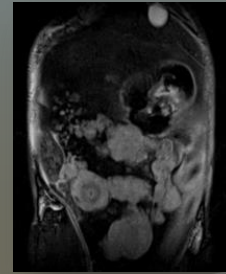
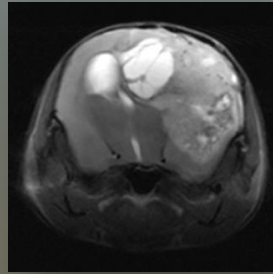




Clinscan 7 T Preclinical MRI

at Hillman Cancer Center



Ideal for Translational Research

- State-of-the-art magnetic resonance imaging system
- Generates the same image formats and runs on the *syngo*® software used on Siemens human 3 T and 7 T MRI systems at the University of Pittsburgh
- Equipment available for a wide variety of preclinical imaging:
 - Rats, mice, shrews, and other small rodents
 - Tissue extracts & cell samples
 - MRI phantoms
- Staff are experts in MR imaging and laboratory animal procedures
- Includes VetEquip RC² anesthesia system and SAII small animal monitoring system
- Eligible for UPCI Pilot Funding Program

Take your research to the next level!

Faculty Director: T. Kevin Hitchens, PhD, MBA
(tkh17@pitt.edu)

Operations Manager: Tao Jin, PhD
(taj6@pitt.edu)

Facility Prices (UPCI Members)

FREE	Protocol development & first animal/sample scan
\$100/hr	All MR imaging. Billed by the minute.
\$60/hr	Expert image analysis. Billed by the half hour.
\$50/hr	Technical assistance with animal procedures (i.v. injections, etc). Billed by the minute.



Clinscan 7 T Preclinical MRI

Advanced Imaging Sequences

- 2D & 3D anatomical imaging:
 - Spin echo, turbo spin echo, FLASH, VIBE, and more!
 - MRI Microscopy
 - Relaximetry
- Diffusion & perfusion imaging:
 - DCE-MRI, DSC-MRI, & DTI
 - Arterial spin labeling (ASL)
- Novel contrast agent testing and development
- Spectroscopy & Spectroscopic imaging (MRSI):
 - Chemical shift imaging
 - Lactate editing
- Multinuclear capabilities:
 - ^1H
 - ^{19}F



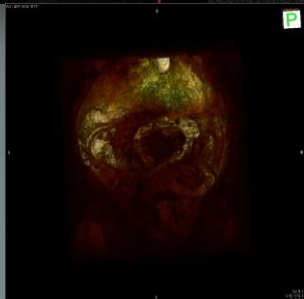
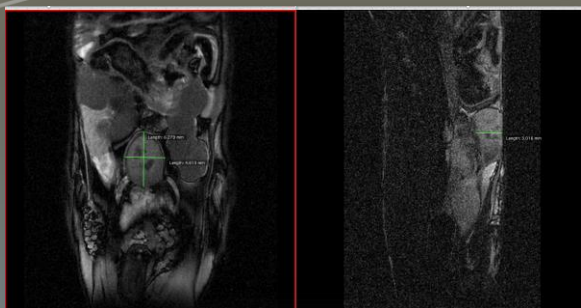
RF Coils Available

Transceiver Coils:

- Rat & Mouse Body ^1H Volume
- Dual-Tuned $^{19}\text{F}/^1\text{H}$ Rat & Mouse Body
- Rat Head & Mouse Body

Receive-Only Coils:

- Mouse 2x2 Cardiac Phased Array
- Mouse Body 8x1 Phased Array
- Rat & Mouse 2x2 Brain Array ^1H



Expert image analysis
available for an additional fee

For more information or to schedule a scan,
contact:

T. Kevin Hitchens, PhD, MBA

Email: tkh17@pitt.edu

Phone: 412-383-8011

Website: www.upci.upmc.edu/imaging