

# Research Histology Services

A Division of the Health Sciences Tissue Bank (HSTB)

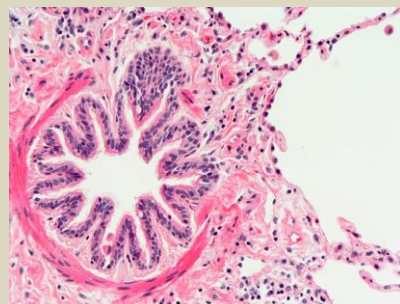
- Project guidance
- Tissue Processing and Embedding
- Various cutting techniques
- Routine H&E staining
- Cell Pellet processing and sectioning
- Frozen Sectioning
- IHC – Single and Multiplex staining Automated and manual
- TUNEL Staining
- Limited Special Stains
- Tissue Micro Array (TMA)
- TCGA correlated TMA
- Whole Slide Imaging
- Unique innovative projects

The HSTB Research Histology Service offers a complete line of histology services to meet your needs. We can provide project estimates and project guidance (histology perspective) from specimen preservation through slide imaging. We design and create Tissue Microarrays (TMA) to capture multiple specimens on 1 slide, up to 240 cores depending on criteria. We offer premade TMA slides that were created from tissues submitted to The Cancer Genome Atlas (TCGA) that can provide genomic characterization to complement your testing.

We are located in UPMC Shadyside Hospital (West Wing Ground Floor, Rm WG21) but have drop off and pick up services in Scaife Hall (Rm A914) and UPMC Magee Women's Hospital (Rm 3528).

For more information, price list and request forms, please visit our website at: <http://tissuebank.pitt.edu>.

Feel free to contact Tony Green directly at 412-623-7898 or [ang119@pitt.edu](mailto:ang119@pitt.edu).



Lab Hours:  
5:00 A.M. – 3:00 P.M.  
(Mon. thru Fri.)  
Closed (Sat. & Sun.)



*This laboratory operates under the UPMC Hillman Cancer Center, Tissue and Research Pathology/Health Sciences Tissue Bank shared resource which is supported in part by award P30CA047904.*