

**UPMC | HILLMAN  
CANCER CENTER**

*Affiliated with the University of Pittsburgh School of Medicine*

## **Genome Stability Program**

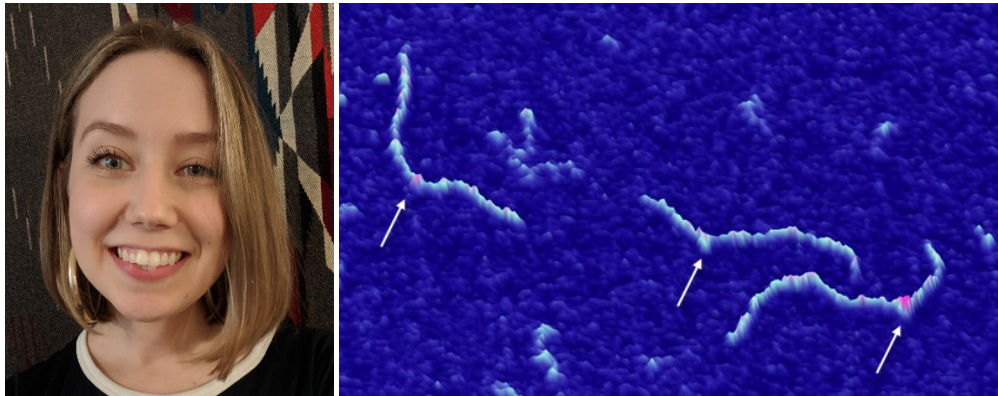
### **Work in Progress**

**Emily Beckwitt, PhD Candidate**

Department of Pharmacology and Chemical Biology

School of Medicine

(Dr. Ben Van Houten's Lab)



***"DNA bending by APE1"***

**Wednesday, October 2, 2019 9:00 a.m.**

Hillman Cancer Center Research Pavilion  
Second Floor Conference Room

Hosted by: Drs. Ben Van Houten and Patty Opresko

Contact : Mary Byrnes 412-623-7766

Email: [maw35@pitt.edu](mailto:maw35@pitt.edu)